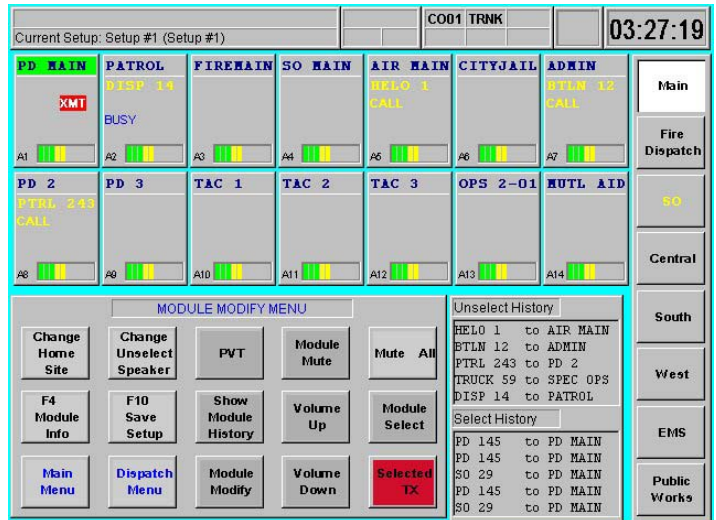


The C3 Maestro dispatch console was designed to cope with the demanding needs of the often-harried dispatcher. For all its performance, it is simple, organized, and efficient to use. Flexible enough to adapt to the dispatcher's changing needs, it is at the same time powerful enough to facilitate dispatch communications with complete control. For clear and simple presentation of information on one screen, users can configure the working environment to meet specific needs.



Product Overview

The C3 Maestro is the dispatcher's best weapon in the fight against time. Simple, organized, and efficient, the C3 Maestro is easy to learn, configure, and operate. A Graphical User Interface (GUI) maximizes productivity while minimizing training time. Large buttons and intuitive, easily customized layouts make maneuvering through the console functions easy and straightforward.

Powerful, Integrated Communications

In addition to classic dispatch functions such as simulselect, patch, emergency, and call history (shown for the last 48 calls), the C3 Maestro provides many advanced features such as receiving status message (off duty, en route, etc.) and Request-to-Talk directly to the dispatcher without tying up a voice channel. The integrated paging feature allows a dispatcher to send individual or group pages via a user-friendly interface and the audio system's internal encoder. The Fire Hall

Alerting feature provides polling acknowledgment and alerting functions to individual fire station radios. Tracking modules allow the dispatcher to review the calls received on a particular programmed talkgroup.

An auxiliary I/O feature allows the dispatcher to monitor and remotely control the state of CEC™/IMC™ auxiliary control relays such as alarm, door, etc. Communication modules for these features plus conventional channels, individual radios, and analog/digital talkgroups may be combined on the same screen.

Unmatched Flexibility

The C3 Maestro allows users to configure their working environment with graphics and the features and functions that work best for them. Console screen setups can be configured to improve efficiency and productivity. Screen configurations can be created for scenarios ranging from crisis situations to shift changes. In

addition to the standard mouse, dispatchers may select the trackball, touchscreen, or ergonomically designed custom dispatch keyboard. Monitor sizes range from 15 to 21 inches.

The performance of any M/A-COM C3 Maestro Dispatch Console with any third-party hardware/software (including computers) other than M/A-COM recommended or approved hardware/software is not guaranteed by M/A-COM, Inc. nor will M/A-COM offer any software or other corrections to improve the performance of the M/A-COM console with such third-party hardware.

For More Information

For more information about this or any other M/A-COM Wireless Systems product, call toll free in the U.S. 1-800-368-3277. From outside the U.S. call 1-434-455-9223 (Asia Pacific), 1-434-455-9229 (Latin America and Middle East), and 1-434-455-9219 (Europe).

General Specifications

Computer Type:

The customized C3 Maestro computer includes fully installed and tested software to support 24 x 7 dispatch operations. A Pentium® microprocessor delivers the processing speed required. An internal CD-ROM facilitates installation of later software releases and optional upgrades.

Display Type:

Color Monitor

Audio Enclosure Interfaces:

Speakers (Select and Unselect)
Microphone
Footswitch
Headset Jack Box
Call-Check Recorder
Paging Encoder
Call Director
Relay Contacts

Power Consumption:

Approx. 3.0A at 110 VAC

Audio Specifications

Nominal Input Range

Headset Mic:

-18 to -6 dBm

Desk Mic:

-27 to -15 dBm

Call Director Patch:

-26 to -14 dBm

Paging Encoder:

-11 to +1 dBm

Console Electronics:

-20 to +10 dBm

Nominal Output Range

Headset Earphones:

-21 to -9 dBm

Call Director Patch:

-11 to +1 dBm

Select and Unselect Recorders:

-8 to -2 dBm

Console Electronics:

-20 to +10 dBm

Maximum Audio Output Power

Speakers:

5W

Physical

Mounting:

C3 Maestro can be mounted on a desktop or optionally, in console furniture. Contact System Engineering for detailed information.

Dimensions (H x W x D)

Computer:

5 x 16.5 x 15.75 in.
(12.7 x 41.9 x 40.05 cm)

Display:

15 x 14.5 x 16 in.
(38.1 x 36.83 x 40.64 cm)
17/17 in. touch display

Keyboard:

2 x 20 x 9 in.
(8.26 x 38.1 x 24.98 cm)

Desktop Speakers

(less volume knob):
6.38 x 6.25 x 3.69 in.
(16.3 x 15.8 x 9.3 cm)

Rack-mount Speakers

(less volume knob):

5.25 x 19 x 3.38 in.
(13.34 x 48.26 x 8.59 cm)

Environmental Specifications

Temperature

Operating:

+50 to +104°F
(+10 to +40°C)

Storage:

-30 to +122°F
(-34 to +50°C)

Humidity:

To 90% non-condensing

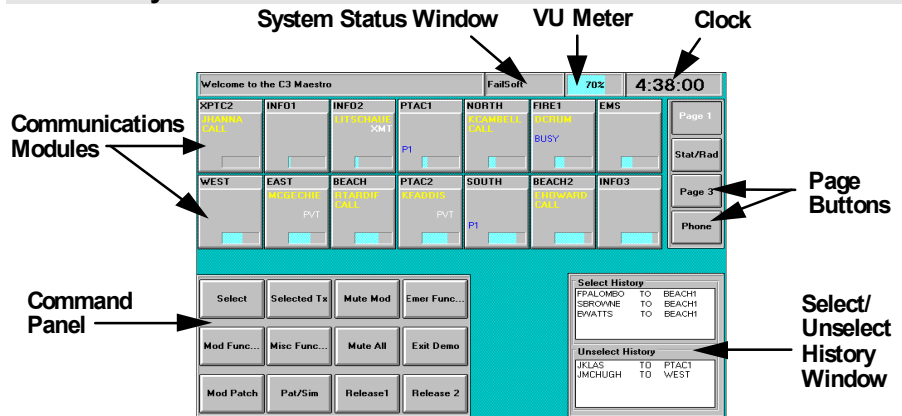
Radio Frequency Interference:

Meets requirements of FCC Part 15 and EN55022 for Class A Equipment

Electro-Magnetic Interference:

Operator console meets IEC 801 Parts 2, 3, and 4 for ESD, radiated RF immunity, and power line bursts

Screen Layout



Core Block Diagram

