

ip | radio™

IP Radio uses Voice over IP technology and remote control of mobile radios to enable voice communications between M/A-COM (Ericsson GE) Orion® and Jaguar™ field radios and PC users located on the agency/company Intranet.

IP Radio controls radios using M/A-COM's digital signaling protocol, EDACS® or conventional, enabling communications and control of many features of these radios.

PC users can:

- Communicate through a single radio, or Simulselect and *broadcast* to multiple radios using different frequency bands, different trunking protocols and in different geographic regions.
- Change channels, EDACS™ talk groups, and systems at the radio.
- Sum audio among multiple radios.
- Make and receive calls to individual radios, with plain English nomenclature.
- Dispatch from multiple PC's located on the network.
- Optionally record and playback traffic at the PC.

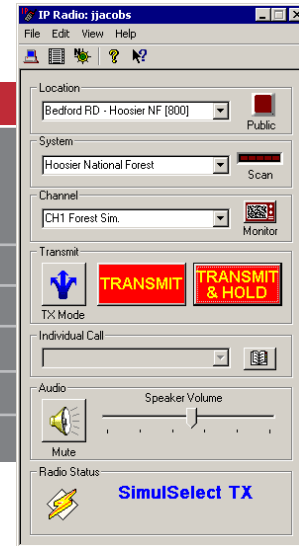
When it comes to extending dispatch communications to multiple users across your network, one rule applies: keep it simple. **IP Radio**, a member of Catalyst's family of remote dispatch and communications systems, provides an intuitive connection for PC users anywhere on the agency/company network to field radio personnel.

Use your Existing Backbone Network

Communications between PC users and radio gateways travels over your existing LAN/WAN infrastructure, eliminating the need for leased lines and their associated costs. The low bandwidth needs of **IP Radio** make this a low impact application on your network.

The Client Server Architecture Gives You Control Over Communications

Remote client software on personal computers communicates with Gateway software, which provides the link between the radio and computer networks. Network administrators assign which PC's can communicate with which Gateways, providing flexible control over dispatch operations.



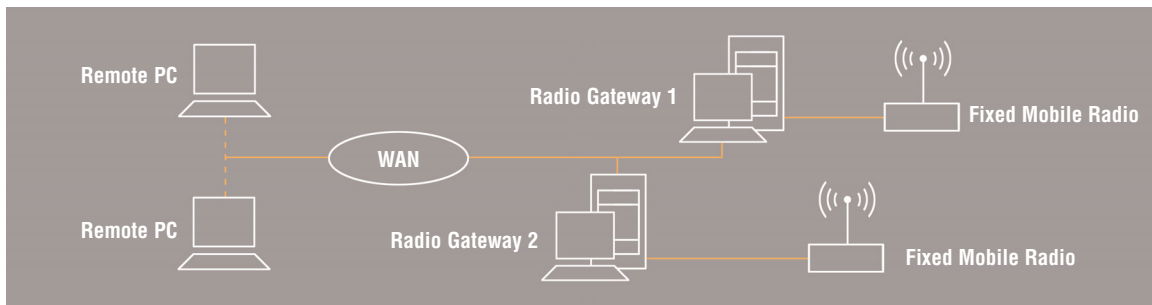
The Main Window for IP Radio displays graphics, simple controls, menus, and on-line help which make this application easy to learn.




catalyst
 communications technologies

Catalyst Communications Technologies, Inc.

147 Mill Ridge Road
 Lynchburg, VA 24502
 p. 434.582.6146
 f. 434.582.6147
 info@catcomtec.com
 www.catcomtec.com



Multiple Remote PC's can Communicate with Multiple Gateways

Advanced Capabilities

Primary or Backup Dispatch

Use as a distributed backup Console system with alternative routing of voice messages and alternative hardware and software.

Multitasking PC

IP Radio allows standard desktop computers on your existing LAN/WAN to transmit and receive voice messages to multiple field radio teams while continuing to be used as your desktop workstation. The Graphical User Interface, on-line help and tool tips make IP Radio easy to learn.

Dial In Capability

Users off the WAN can dial-in to the agency/company network and establish voice communications with radio users from anywhere a phone connection exists, using as little as 19.2 Kbps.

Optional Recorded Audio

Review calls to promote safety and supervise radio communications without the cost of logging recorder hardware.

Summed Audio/SimulSelect

Selected radio communications in one speaker, summed or scanned audio in another speaker. Simulselect multiple Gateways for broadcast transmission.

Rapid Deployment

Download remote client software to new Dispatch locations on your network and they are active in minutes.

Orion and Jaguar Compatible

IP Radio interfaces with M/A-COM Orion and Jaguar Radios, even on the same network.

System Specifications

Remote PC

Software supplied by Catalyst for field installation on customer supplied PC.

Minimum Configuration

- Pentium® III Processor
- 128 Mbytes of RAM
- Full Duplex Audio Card (SoundBlaster equivalent)
- Network Card (NDIS)
- Headset or Speakers and Microphone
- Microsoft Windows 98/2000/NT/XP (MS 2000/XP required for Summed Audio Capability)

Radio Gateway

Delivered as a fully integrated solution with hardware and software, including modern Pentium processor, hard drive, CD ROM drive, keyboard, monitor, mouse, and cable/interface.

One Radio Gateway and Fixed Mobile Radio is required for each geographic region.

Each Gateway supports up to 64 PC users (up to 25 concurrent)

Each Remote PC may simultaneously monitor up to 16 Radio Gateways. Voice traffic is monitored from one Radio Gateway at a time (except in *Summed Audio* mode) while call indications are monitored from up to 16 Radio Gateways simultaneously.



Catalyst Communications Technologies, Inc.

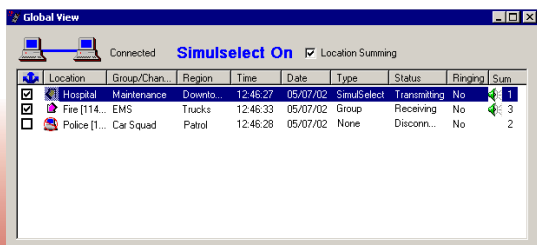
147 Mill Ridge Road
Lynchburg, VA 24502

p. 434.582.6146
f. 434.582.6147

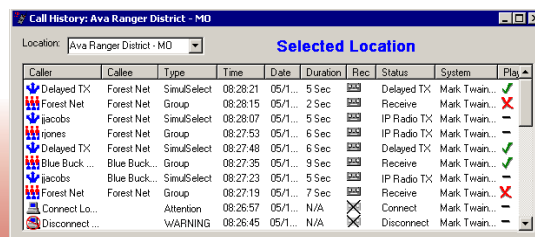
info@catcomtec.com
www.catcomtec.com

Copyright © 2003 Catalyst Communications Technologies, Inc.

Windows® screens provide an enhanced visual method for viewing information about your radio.



The Global View Window shows the PC user the status of all the Radio Gateways on the network.



The Call History Window shows the PC user the last 32 calls at each location. A record of every call, and its recording if enabled - is stored at the Gateway.